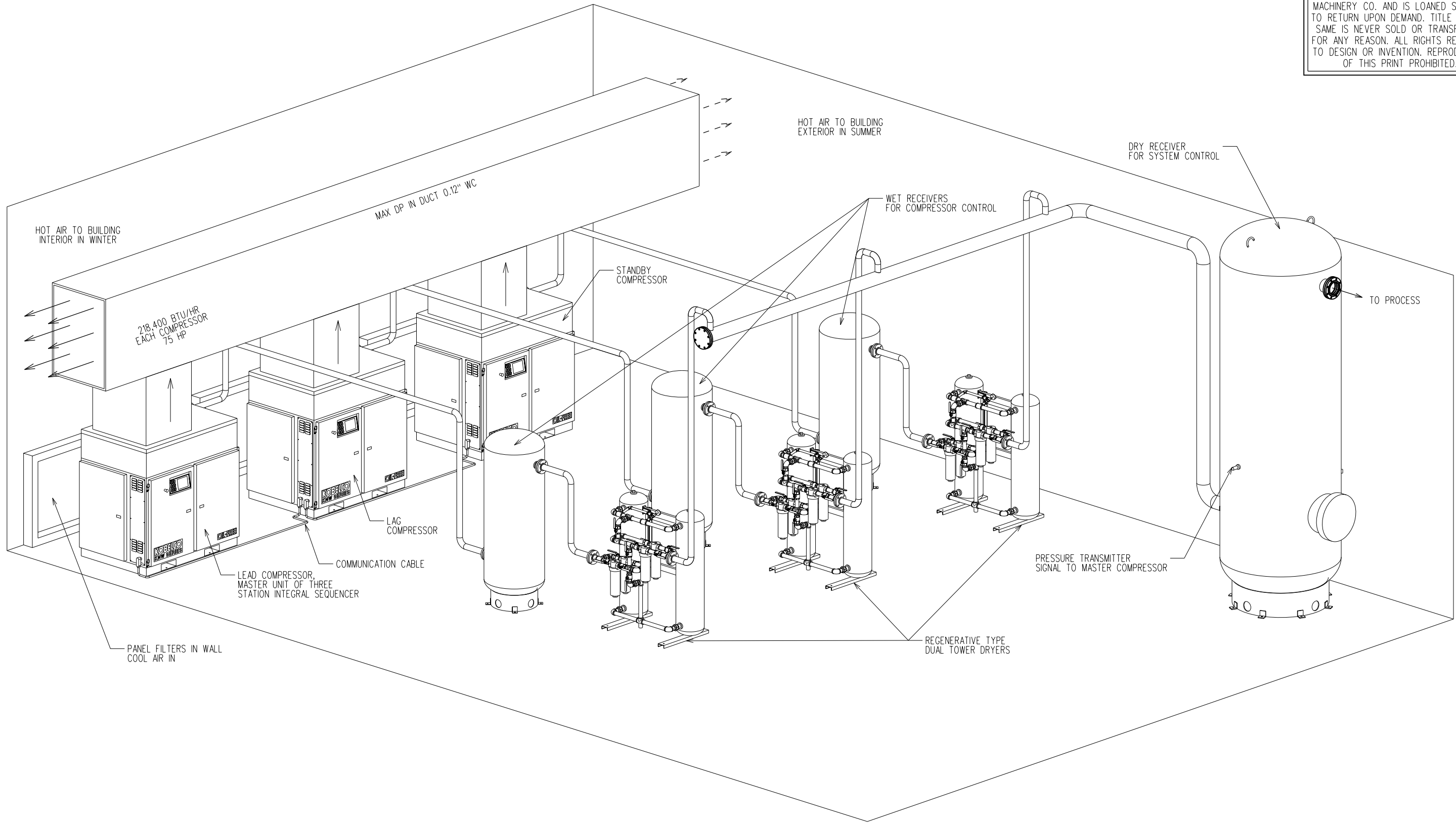


PROPRIETARY

THIS PRINT IS THE PROPERTY OF ROGERS MACHINERY CO. AND IS LOANED SUBJECT TO RETURN UPON DEMAND. TITLE TO THE SAME IS NEVER SOLD OR TRANSFERRED FOR ANY REASON. ALL RIGHTS RESERVED TO DESIGN OR INVENTION. REPRODUCTION OF THIS PRINT PROHIBITED.



| REV | DATE | BY | DESCRIPTION |
|-----|------|----|-------------|
| | | | |
| | | | |
| | | | |

| | | |
|---------|------------|-------------|
| DRAWN | K. BECKMAN | 27 JAN 2010 |
| CHECKED | | |
| SHEET | SCALE | 1:48 |

ROGERS MACHINERY COMPANY, INC. CORPORATE ENGINEERING
 14650 S.W. 72ND AVENUE
 PORTLAND, OREGON 97224
 www.rogers-machinery.com

KOBELCO KNW SERIES
 TYPICAL INSTALL W/ HEAT RECOVERY
 3 AIR-COOLED UNITS W/ 3 STATION
 INTEGRAL SEQUENCER

DRAWING NUMBER
REFERENCE